

CERTIFICATE OF LOCATION OF GOVERNMENT CORNER

NORTHEAST Corner of Section 27, Township 107, Range 41, 5TH P.M.

STATE OF MINNESOTA, County of MURRAY

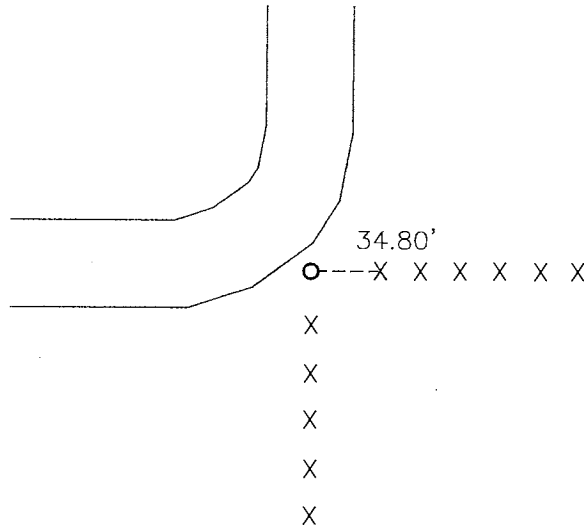
At the corner location shown on the sketch:

On _____ found a _____
DATE

left monument as found, lowered monument, removed monument (explain)

On 08-02-2010 placed a 1" PIPE WITH SEAL #43844
DATE

SKETCH OF REFERENCE TIES



Minnesota State Plane Coordinate
System Murray County Datum
NAD83 (1996)

N: 174038.012
E: 506134.006

Nail and survey marker in fence post East 34.80'

Statement of evidence relative to this corner location is on back of page.

I hereby certify that this document and the data contained herein was prepared by me or under my direct supervision.

SIGNATURE

1/12/11
DATE

Registration No. 43844

Land Surveyor, Professional Engineer
 County Surveyor, County Engineer

OFFICE OF THE COUNTY RECORDER
County of _____

I hereby certify that this document was filed in the Co. Recorders office at _____ .M on the _____ day of JAN 18 2011 A.D. 20____

County Recorder James V. Johnson
By _____, Deputy

DOCUMENT NO. _____

Statement of Evidence

In 1861, L.G.M. Fletcher did the original subdivision of the township.

In 2000, the Minnesota DNR did a survey in Section 26-107-41. They computed a point at the corner.

On August 2, 2010, Bueltel-Moseng Land Surveying used the DNR survey to calculate a point at the corner. We set a 1" pipe with seal #43844 at the computed point. It fell in the centerline of the roads to the north and west and in line with the fences to the east and south.